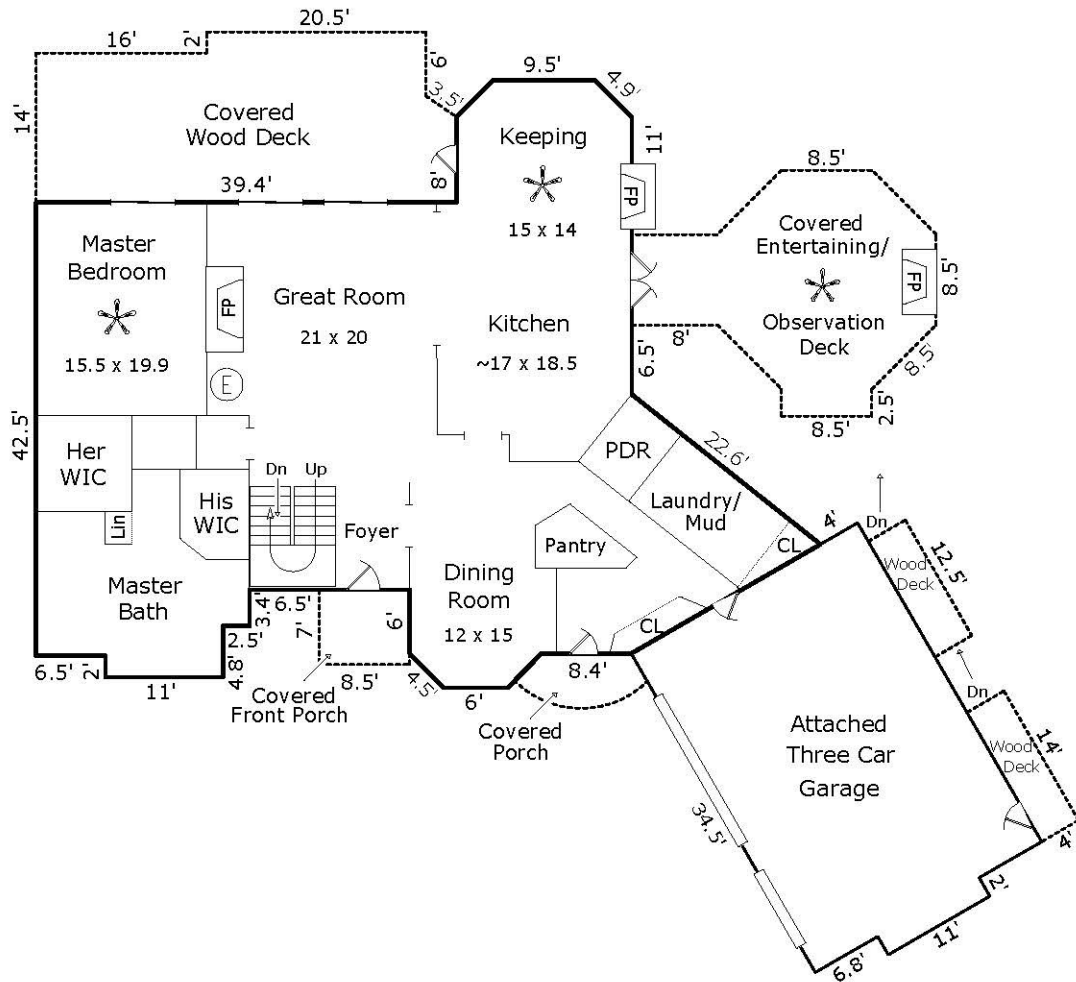
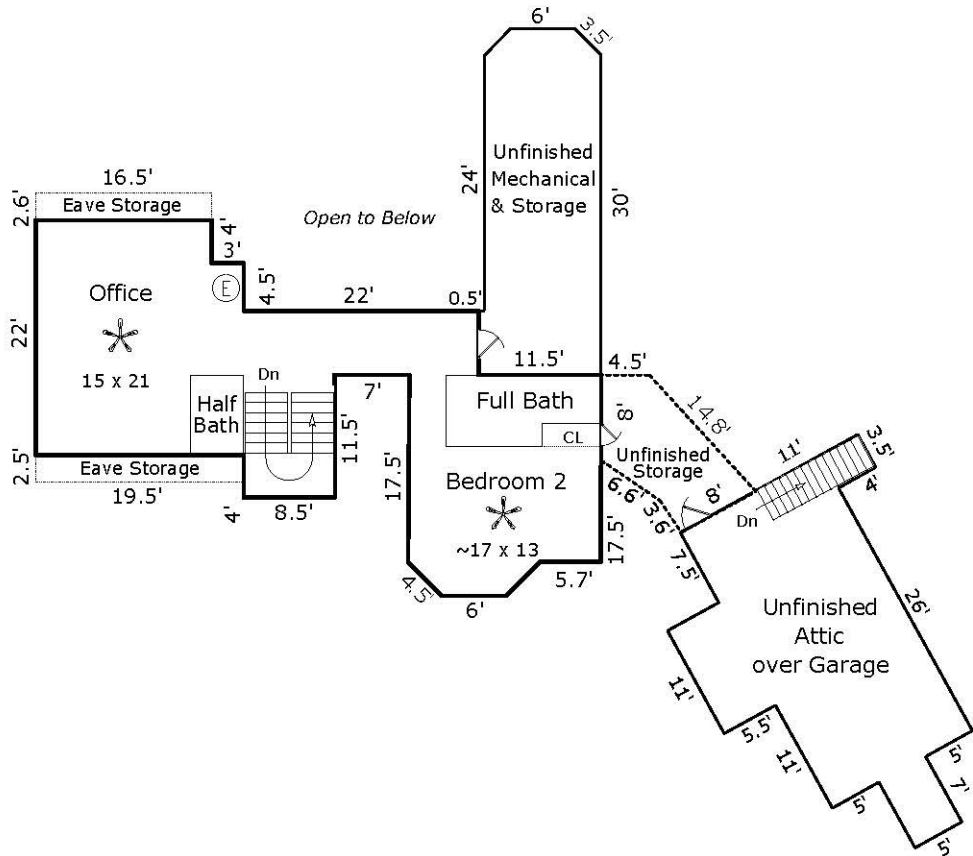


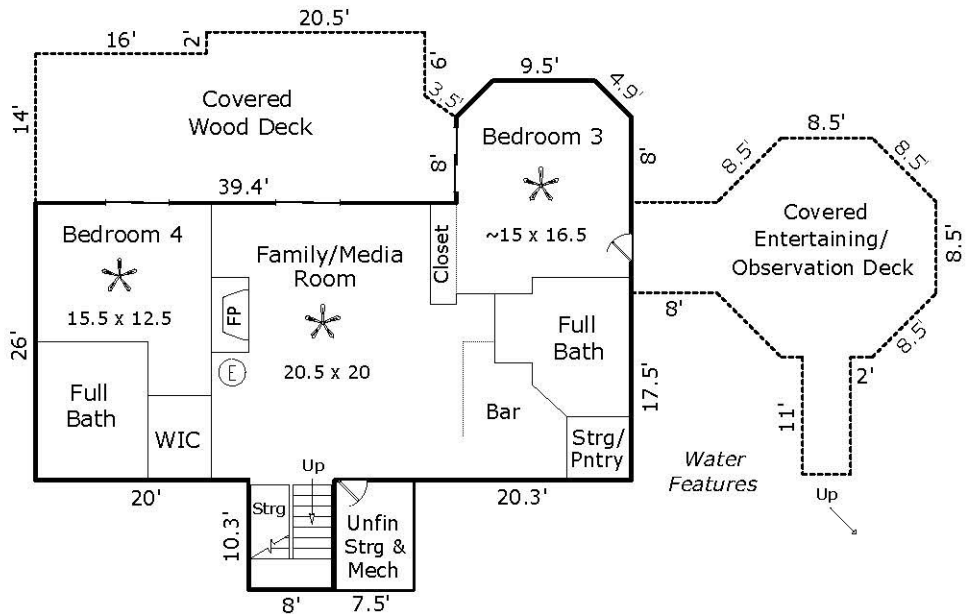
MAIN FLOOR



SECOND FLOOR



LOWER LEVEL



AREA CALCULATIONS

Main Floor Heated Living Area = 2,711 sq. ft.

Second Floor Heated Living Area = 992 sq. ft.

Lower Level Heated Living Area = 1,710 sq. ft.

TOTAL HEATED LIVING AREA = 5,413 sq. ft.

Attached Garage = 867 sq. ft.

Main Rear Wood Deck = 578 sq. ft.

Main Octagonal Deck = 438 sq. ft.

Covered Front Porch = 60 sq. ft.

Covered Side Porch = 49 sq. ft.

Garage Covered Decks = 106 sq. ft.

2nd Floor Unfin Strg/Mech Areas = 469 sq. ft.

Unfin Attic over Garage = 552 sq. ft.

Lower Rear Wood Deck = 578 sq. ft.

Lower Octagonal Deck = 466 sq. ft.

2nd Floor Eave Strg Areas = 92 sq. ft.

LL Unfin Strg/Mech Rm = 77 sq. ft.